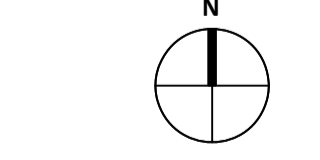


**General Notes**  
Do not scale from drawings (excluding CAD files).  
All dimensions must be verified on site. No use, disclosure,  
dissemination or duplication of any content in this document  
is allowed without prior consent by PCOT Architects. This  
drawing may not be edited or modified by the recipient.

**NOTES:**

1. 2. 3. 4. 5. 6. 7. 8. 9. 10. 11. 12. 13. 14. 15. 16. 17. 18. 19. 20. 21. 22. 23. 24. 25. 26. 27. 28. 29. 30. 31. 32. 33. 34. 35. 36. 37. 38. 39. 40. 41. 42. 43. 44. 45. 46. 47. 48. 49. 50. 51. 52. 53. 54. 55. 56. 57. 58. 59. 60. 61. 62. 63. 64. 65. 66. 67. 68. 69. 70. 71. 72. 73. 74. 75. 76. 77. 78. 79. 80. 81. 82. 83. 84. 85. 86. 87. 88. 89. 90. 91. 92. 93. 94. 95. 96. 97. 98. 99. 100.

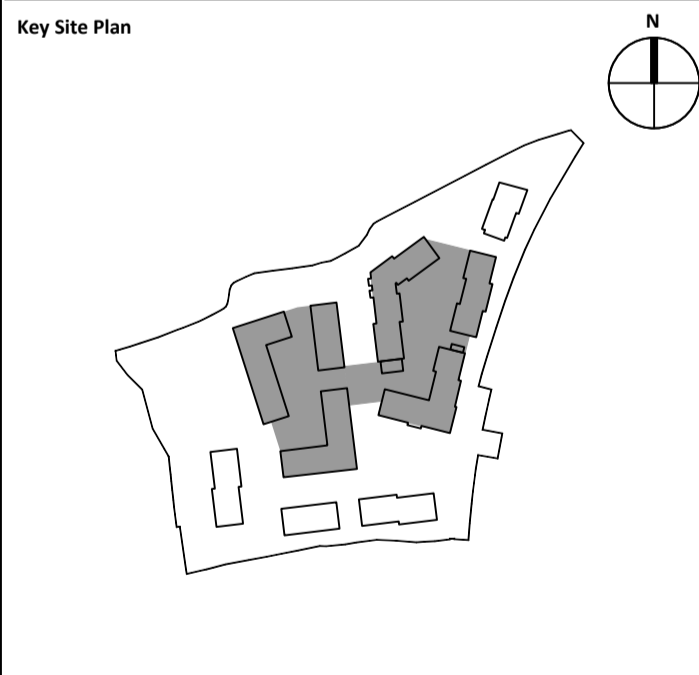


UNDERCROFT - 94  
 BASEMENT - 206  
 TOTAL NUMBER OF PARKING SPACES - 300  
 INCLUDING: DISABLED SPACES - 35  
 EV POINTS - 37

# BASEMENT PLAN

| Date | Rev. | Revision Description |
|------|------|----------------------|
|      |      |                      |
|      |      |                      |
|      |      |                      |
|      |      |                      |
|      |      |                      |
|      |      |                      |
|      |      |                      |
|      |      |                      |
|      |      |                      |
|      |      |                      |
|      |      |                      |
|      |      |                      |
|      |      |                      |
|      |      |                      |
|      |      |                      |
|      |      |                      |
|      |      |                      |
|      |      |                      |
|      |      |                      |
|      |      |                      |
|      |      |                      |
|      |      |                      |

**Project Title** Fosterstown North SHD  
**Address** Lands known as Fosterstown North, Dublin Road /R132 Swords, Co. Dublin



**Client** J. Murphy (Developments) Limited  
**Lead Architect** PCOT Architects  
 57 Merrion Square North, Dublin 2, D02 CP02  
 087 9057495  
 info@pcotarchitects.ie

**Public Realm Architect** ARROW Architects ApS  
 25 Lower Leeson Street, Dublin 2, D02 XD77  
 +45 4226 2860  
 info@arrowarchitects.com www.arrowarchitects.com

**Project Phase** PLANNING SUBMISSION

**Sheet Name** UNDERCROFT / BASEMENT CAR PARKING

**DWG NO.** PL-21-301  
**Status** PLANNING  
 Rev. J  
 Date 03-2022  
 Scale 1:400 @A1